

PH-49 | 41910-000

CT Colonography Phantom NCCS

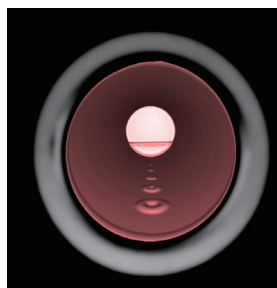
Dosimetry

CT

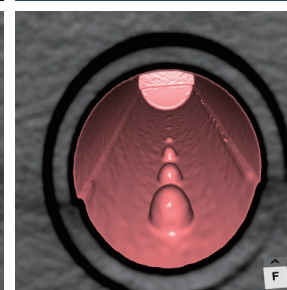
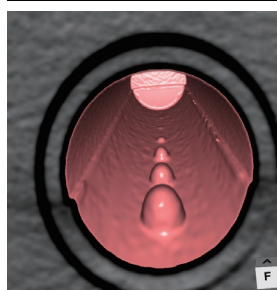
STORAGE CASE

Innovative study tool for safe and effective CT Colon screening

Product supervision:
National Cancer Center (Japan)



SHOW MORE!



FEATURES

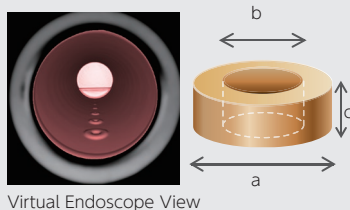
- | Cylindrical colon units with targets that represent polyps can be set at the position of ascending colon, descending colon and rectum in the life-size lower torso phantom
- | Four types of colon units are included for evaluation. Each unit has six targets lining in sequence on the inner wall of the unit
- | Contrast agent can be poured into the colon units for tagging
- | Pencil shaped ion chambers can be inserted in the center of the phantom for CTDI measurement

APPLICATIONS

- | Virtual colonography
- | Visualization and detection of targets
- | Study on optimal dose for low dose CT colonography
- | Evaluation of accuracy of measurement (size, volume)
- | Study on optimal density of contrast media

VARIATION of Simulated Tumors

Depressed type
-2 variations-



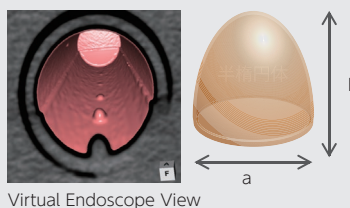
Depressed I: fixed diameter

a: Outer diameter	b: Inner diameter	c: Height
0.7 cm/ 0.27 in	0.35 cm/ 0.13 in	0.2 cm/0.07 in
		0.15 cm/0.06 in
		0.1 cm/0.03 in
		0.05 cm/0.02 in
		0.025 cm/0.01 in
		0.015 cm/0.005 in

Depressed II: fixed height

a: Outer diameter	b: Inner diameter	c: Height
1.0 cm/0.39 in	0.5 cm/0.2 in	0.1 cm/ 0.03 in
0.7 cm/0.27 in	0.35 cm/0.13 in	
0.5 cm/0.20 in	0.25 cm/0.1 in	
0.3 cm/0.11 in	0.15 cm/0.06 in	
0.2 cm/0.07 in	0.1 cm/0.03 in	
0.1 cm/0.03 in	0.05 cm/0.02 in	

Projection type
-2 variations-



Projection I: fixed diameter

a: Diameter	b: Height
1.0 cm/ 0.4 in	0.7cm/0.27 in
	0.5 cm/0.20 in
	0.3 cm/0.11in
	0.2 cm/0.07 in
	0.1 cm/0.03 in
	0.05 cm/0.02 in

Projection II: fixed ratio

a: Diameter	b: Height
1 cm/0.4 inch	1.0 cm/0.39 in
0.7 cm/0.27 in	0.7 cm/0.27 in
0.5 cm/0.2 in	0.5 cm/0.20 in
0.3 cm/0.11in	0.3 cm/0.11in
0.2 cm/0.07 in	0.2 cm/0.07 in
0.1 cm/0.03 in	0.1 cm/0.03 in

DESCRIPTIONS

SET INCLUDES

- | | | |
|------------------------|------------------------------|----------------|
| 1 lower torso phantom | 3 plugs for colon unit hole | 1 base holder |
| 1 acrylic container | 1 plug with ion chamber hole | 1 storage case |
| 4 types of colon units | 1 plug for ion chamber hole | 1 manual |
| | 1 holder for colon unit | |

SPECIFICATIONS

Packing size: W63 x D50 x H29 cm
W24.8 x D19.6 x H11.4 in

Packing weight: 32 kg / 70.5 lb

MATERIALS

Soft tissue: urethane based resin (density: 1.06)
Synthetic bone: epoxy resin (density: 1.31)

